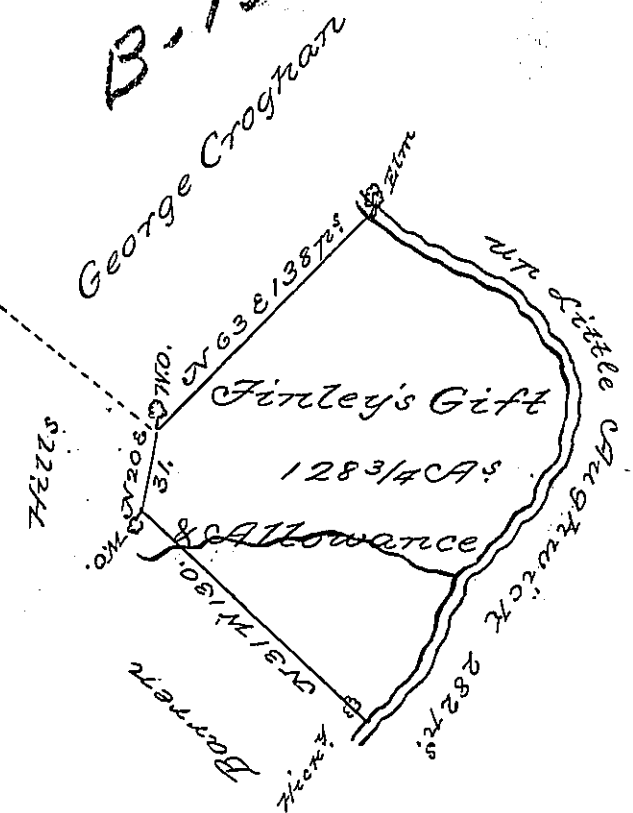


B-13-177



Courses up the
Creek from the
Etm.
S 35 E 52.
S 50 E 18.
S 8 E 60.
S 47 W 16.
S 61 W 62.
S 25 W 24.
S 58 W 50 to the Hickory.

In pursuance of an Order, N^o 225, dated the first day of August 1766, Surveyed the Ninth day of October following the above described Tract of Land situate on Little Aughwick Creek in the County of Cumberland for James Hunter, containing one hundred and twenty eight Acres and three quarters and the usual allowance of six acres of^t for Roads &c of Richard Tea Deputy Surveyor.
To John Lukens Esq. Surveyor General.

IN TESTIMONY that the above is a copy of the original remaining on file in the Department of Internal Affairs of Pennsylvania, made conformably to an Act of Assembly approved the 16th day of February, 1833, I have hereunto set my Hand and caused the Seal of said Department to be affixed at Harrisburg, this

Third day of August 1897

James White
Secretary of Internal Affairs.